

Embracing Implementation Science: An Organizational Strategy to Support Sustainable Practice Change

CPHA Conference

June 15, 2016

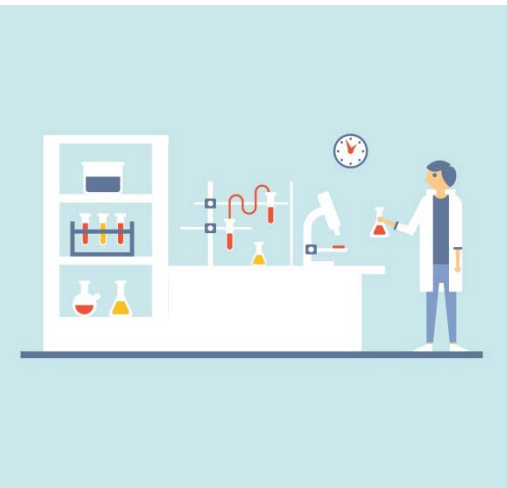
How we see implementation science



@iStockphoto.com/EnisAksoy

Implementation

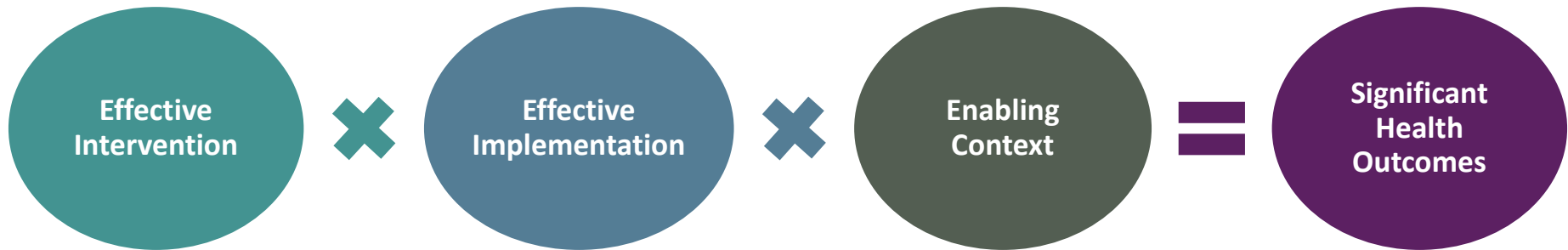
The **practical work** involved in developing plans, strategies, infrastructure, and implementation supports to put into practice an activity or program of known dimensions



@iStockphoto.com/TopVectors

Implementation Science

A **field of science** that is looking to better understand implementation and sustainability, develop valid measures, understand what influences implementation, what implementation strategies are most effective in supporting practice change, and more!



Source: <http://nim.fpg.unc.edu/learn-implementation/implementation-defined>

Learning what Implementation Science has to offer....

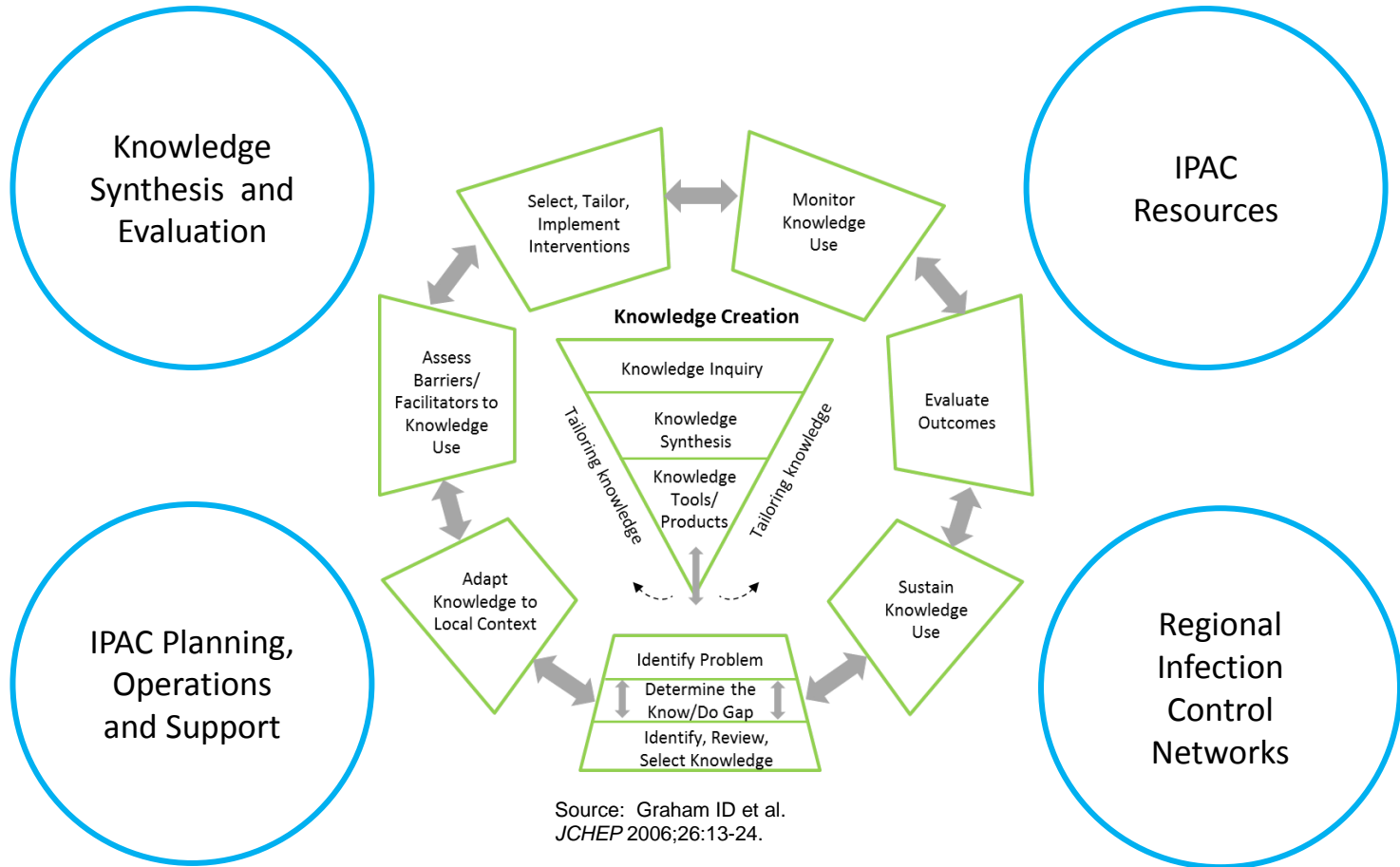


@iStockphoto.com/erhui1979

OUR GOAL:

- To develop an organizational strategy to integrate implementation science into the work of the Infection Prevention and Control (IPAC) Department at Public Health Ontario
- Embracing implementation science as an organization means taking a more purposeful, systematic and evidence-informed approach to how we select and deliver implementation support

Reducing the burden of hospital acquired infections in the healthcare setting



Source: Graham ID et al. JCHEP 2006;26:13-24.

Implementation Science Working Group



@iStockphoto.com/elenabs

- Launched in January 2014 ~ 20 staff
- External expertise
- Explore how the IPAC department can use implementation science to achieve sustainable practice change

Implementation Science Working Group Activities 2015-2016



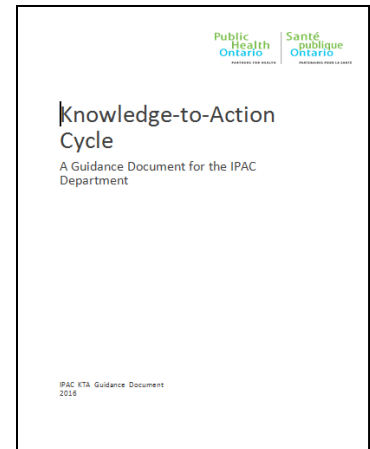
Guidance Document

Focus:

- Better define processes in the KTA Cycle
- Map relevant concepts, resources and tools from the implementation science literature
- Make connections to IPAC specific projects
- Make recommendations for programming, outreach and evaluation

Applications:

- Informing future work that involves any efforts to support the knowledge to action process.
- Informing the content and focus of internal capacity building events



Capacity building

Focus:

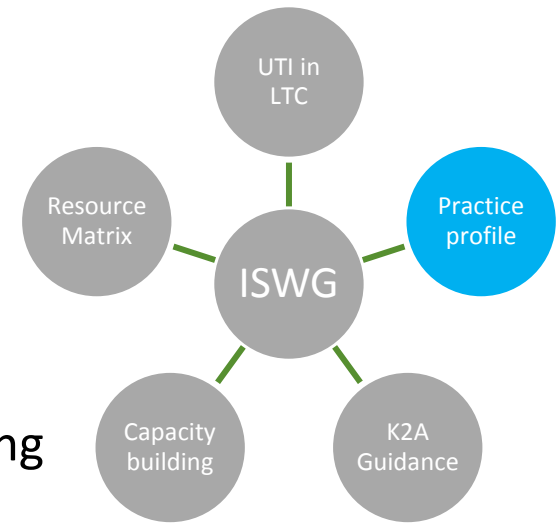
- Identifying relevant topics, concepts, theories, and tools from the implementation science literature
- Identifying positions within the department that need to have awareness, knowledge and/or skills in these areas
- Identifying existing resources to support capacity building activities
- Establishing a capacity building plan



Practice Profile

Focus:

- Thinking about all the functions of the RICNs including the function of “implementation facilitation”
- Defining competencies to support the function of “implementation facilitation” and others
- Making a connection in the core competencies to IS topics and skills identified by other project teams



New Program

Focus:

- Trying out new approaches and perspectives from IS to support an evidence-to-practice gap
- Building a new program that supports the implementation of best practices around the assessment and management of UTIs in long-term care
- Applying an implementation science lens towards the development of a provincial support system
- Thinking about how we can measure quality implementation and factors that influence the implementation of the program moving forward

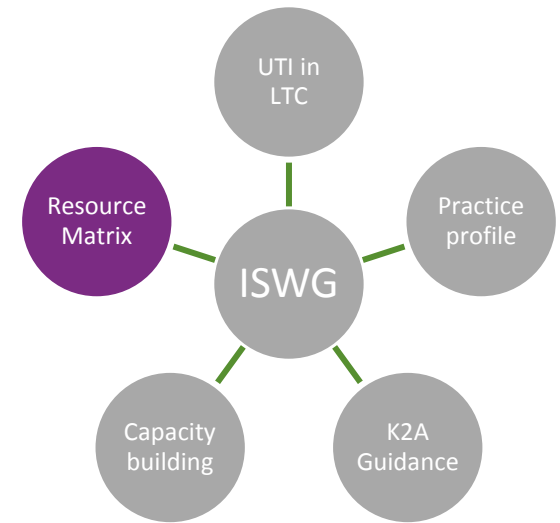


Resource Matrix

- *The IPAC department has a number of tools and resources that have been developed that are used in the process of facilitating implementation of IPAC practices and programs in the field*

Focus:

- Supporting increased consistency in the use and awareness of PHO IPAC resources and tools
- Establishing an inventory of what we have, categorization by topic areas, and making linkages
- Creating an interactive tool that supports IPAC staff access relevant resources and tools for different subject matter themes



Key facilitators to our journey so far!

- Support and active participation across all levels of leadership
- Empowering staff across the department to lead project teams
- Learning and being inspired by leaders in the field
- Support from an external “implementation coach”
- A dedicated working group to monitor progress and keep the momentum going
- Establishing a safe environment that encourages staff to admit they are confused or lost! The implementation science field is complex!

We are looking for opportunities to share and connect!

Andrea.Chambers@oahpp.ca